

In this week's edition:

[Booking form for Week 3 onsite provision](#)

[Indication of provision required to support frontline and blue-light workers](#)

[Arrangements for the setting of student work over Easter](#)

[Information for students in years 10 and 12](#)

[Information for Students in Year 11](#)

[Get Involved! Proud Thursday](#)

[Get Involved! Vote for our new library mural](#)

[PGS food bank](#)

[Is your child eligible for free school meals?](#)

[Barnsley Employment Support Helpdesk](#)

[Families suffering financial hardship: BMBC](#)

[Useful links](#)

increasing daily. This means that staff in these categories of key workers are being asked to work longer shifts, weekends, and more often. As a school we are committed to doing what we can to support these critical workers, including if needed, opening for longer hours and over the Easter weekends.

In order for us to establish whether there is a need for this facility at Penistone Grammar School we are asking any front-line or blue-light worker parents to complete a short questionnaire, accessible via the following link: [Indication of Provision Required](#). This will provide us with an indication of the extent to which this provision would be accessed if available and we will use the information collated to inform our planning moving forwards.

Arrangements for the setting of student work over Easter

We have been impressed with the quality of work the majority of our students are completing at home during these unprecedented times. Our year 7, 8 and 9 teachers are setting work from the curriculum, which is project themed and practice task based so students can self-assess and evaluate their own learning. The main focus of this work is to enable students to continue with positive habits and routines of learning of the national curriculum. Teachers will endeavour to provide feedback on these pieces of work, however, due to the nature of the learning, the work completed will not always be teacher assessed at the level it would have been if the tasks were completed in school under normal circumstances.

This Friday, 3 April, we enter our two-week Easter break. We have decided to provide work for students to complete during this period to allow them to continue with positive habits of learning.

Our Y10 and Y12 students will receive Easter home learning to the level they would typically have received if we were operating as normal. For example, revision for upcoming practice exams, coursework completion and/or exam practice questions.

Students in Y7, Y8 and Y9 will receive the option of both project and practical tasks to complete. These will include a short story writing challenge, a music project, drama activities, PE physical challenges and MFL online practice tasks. For our students in years 7, 8 and 9, these activities will be voluntary, and we would ask that parents and carers help decide how much students complete each day in order to maintain a healthy body and mind. We look forward to these activities being embraced by our students

Booking form for Week 3 onsite provision

The Booking form for Key Worker Parents and the parents and carers of those students considered vulnerable for the period Monday 6 to Friday 10 April is now open.

Link: [Booking Form](#)

In line with the Cabinet Office and Department for Education guidance, if children can stay safely at home, they should. Please complete the booking form for next week by no later than **9am on Friday 3 April**. This is so we can ensure we have the appropriate level of provision set up in school.

Should you need to make a new booking or make amendments to an existing booking after the deadline please email enquiries@penistone-gs.uk.

Indication of provision required to support frontline and blue-light workers

As we come together as a nation to fight the coronavirus, we would like to take a moment to recognise those of you who are fulfilling key worker roles, particularly acknowledging the contribution made by those currently working for and supporting the NHS. On behalf of every member of our learning community, you have our deep appreciation and gratitude for all you are doing.

As we continue to move towards the peak of the coronavirus pandemic in the UK, the scale of the challenge faced by frontline and blue-light workers is



and would encourage parents to get involved wherever possible!

Information for students in years 10 and 12

We would like to thank you for your continued support in encouraging your children to continue working hard at home during this period of school closure. Our analysis of FROG highlights the fantastic start both Year 10 and Year 12 have made, with the vast majority of tasks being completed by our students. It is vital that they now maintain this during this difficult period to ensure that they stay up to date with subject content and their learning. Depending upon the length of the school closure, this may well be content that our staff do not have time to cover again next year and therefore, the quality of work completed at home may well have a significant impact on the grades achieved next summer.

By way of a reminder; students will be set work for each period of their examined classes, each day, with clear deadlines for completion. Students should access their work via Frog, where students can also find a video link to instructions advising them how to do this.

If there is any further support you need, please do not hesitate to contact us via email to enquiries@penistone-gs.uk.

Information for students in Year 11

Careers Inc: Continuation of Careers Support

Even though school is closed, we wanted to make you aware that you can still get in touch with Careers Inc advisers, who will be operating remotely during this time.

The qualified advisers at Careers Inc can offer information and guidance on a range of topics including options after Year 11, helping students to research and/or apply for a place in a sixth form, college, apprenticeship or training. They can also provide students with information on qualifications such as BTECs, A Levels and NVQs, to assist students in making decisions about their future.

Careers Inc advisers can be contacted by completing the enquiry form which is shown in the careers section of our school website. The link is <https://www.careersinc.uk/blog/2020/03/18/virtual-careers-advice/>. Once complete, one of the advisers from the Careers Inc team will be in touch by telephone or email within 48 hours, Monday to Friday.

Access to Unifrog

To support Year 11 students during the school closure period, they will all be given an opportunity to register for a Unifrog account, set up by colleagues from our Post 16 Centre. Details of how to do this will be posted on Frog. Unifrog is an on-line careers/education and skills development portal through which Post 16 staff will regularly suggest activities for

students to complete. These activities, whilst not compulsory, are highly recommended and suitable for all students, regardless of their post-16 pathway.

Get Involved! Proud Thursday

During this period of school closure, schools across Barnsley Local Authority are collectively celebrating the fantastic work of their students as part of an initiative called 'Proud Thursday'. We know many of our students, although not in school, are still working hard and demonstrating excellent effort in all they continue to do, with some amazing things being achieved in their own homes! We want to make sure we celebrate as much of this as we possibly can, using Proud Thursday as a vehicle for this. Please encourage your children to upload photos or videos of their work either directly to our Twitter account: @PGSALC using #ProudThursday, or to our dedicated Proud Thursday email account: prouthursday@penistone-gs.uk. (Please note, by sending a photograph or video to prouthursday@penistone-gs.uk, you/your child is providing your/their consent for the information shared, together with the student's name and year group, to be published on Twitter).

Get involved! Vote for our new library mural

Fantastic local artist, Caroline Potts has created three beautiful images especially for the students of Penistone Grammar School and we need your help to decide which one she should paint as a mural outside the entrance to our new school library!

Image 1:



Image 2:

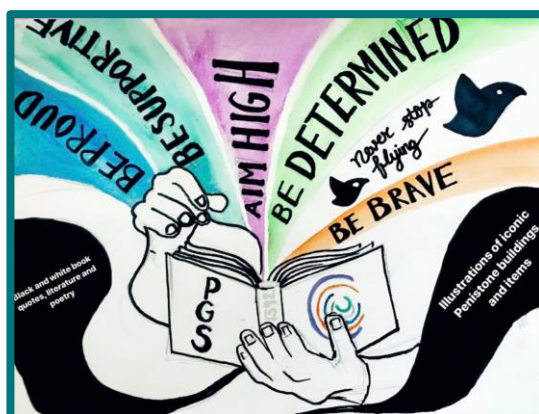
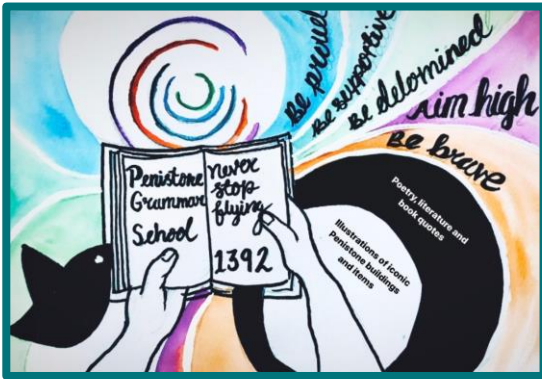


Image 3:



To cast your vote head over to our Twitter account (@PGSALC) and give your favourite a 'like':

- [Image 1](#)
- [Image 2](#)
- [Image 3](#)

The image that has the most 'likes' will be the one that Caroline creates, ready for our library opening.

For more information about our new library, or to find out how you can support its development, you can follow [Mrs Demetriou's blog](#) or head over to our [DonateMySchool](#) page.

PGS food bank

This is a challenging time for everyone, and there are families within our community who are particularly struggling in the wake of the coronavirus pandemic. Please remember that if you or a family you know need support, you can contact us via email to enquiries@penistone-gs.uk and we will arrange for a food parcel to be delivered.

We would also remind you that we are still gratefully accepting donations to our food bank; items can be dropped off in our reception entrance. We would ask that you continue to keep yourself and others safe and do not breach the Cabinet Office's [full guidance on staying at home and away from others](#) (published on 23 March) when making your donation.

Is your child eligible for free school meals?

The challenges faced by some families have led to changes in financial circumstances that may mean they now need to access benefits. If this applies to you, please check to see whether your child is now eligible to receive free school meals.

To qualify, your child will be in full time education and you receive one of the following benefits:

- Income support
- Income based job seekers allowance
- Income related employment and support allowance
- Guaranteed element of state pension credit
- Child tax credit with no working tax credit and an income as assessed by the Inland Revenue that does not exceed £16,190 (although this is subject to change annually)

- Support under Part 1V of the Immigration and Asylum Act 1999
- Universal Credit with a household income of less than £7,300 per year (after tax and not including any benefits you receive)

Please note, children who receive a qualifying benefit in their own right are also entitled to receive free school meals.

Your child won't qualify if you are receiving working tax credits and disabled working tax credits, except for the 4-week run-on paid after you've stopped qualifying for working tax credits.

Further information including how to apply, is available via the following link:

<https://www.barnsley.gov.uk/services/children-families-and-education/schools-and-learning/free-school-meals/>

You can also call Barnsley Metropolitan Borough Council on 01226 787787 (select option 3).

Students who are eligible for free school meals will continue to receive their entitlement throughout the school closure period, receiving a £15.00 e-voucher or gift card each week. Although the Department for Education have stated that this scheme will only cover term time weeks, to support our lowest income families we have committed to continue to fund free school meals over the Easter holiday period.

Barnsley Employment Support Helpdesk

During these difficult times, many residents are unfortunately facing uncertainty about their current and future employment. To address this, and to support Barnsley residents, the Local Authority's employment and skills team have developed a simple, single point of contact to make it easier to speak to someone and access the free support available to residents who may have been:

- Furloughed
- Laid off/unemployed
- Are at risk of redundancy
- Looking to develop or grow skills

Barnsley Council's Employment and Skills service has joined forces with Enterprising Barnsley and other employment agencies to provide access for residents to employment and skills support. The **Barnsley Employment Helpdesk** provides a simple single point of contact for all residents who would like to speak to someone and access support. The helpdesk will aim to respond to enquiries on the same day, with a referral to support within 24 hours.

- Support can be accessed through the website and its webchat function:
<https://www.enterprisingbarnsley.co.uk/support-for-employment/>
- Or, directly through the following email address:
employmentsupport@barnsley.gov.uk



The Barnsley Employment Helpdesk can provide advice to determine eligibility for Universal Credit and how to start and prepare claims; job searching, getting a CV ready, support with applications and interviews and access to free training if residents want to develop skills for a new role or promotion.

Unfortunately, currently the helpdesk is only able to receive enquiries through the email address or webchat function detailed above. However, if you need support and are unable to access email or webchat you can ask someone to email the helpdesk with your phone number on your behalf and someone from the helpdesk will contact you via telephone.

Families suffering financial hardship: BMBC

In these unprecedented times, Barnsley Metropolitan Borough Council (BMBC) have a range of support services for those individuals and families who may find themselves facing hardship, full details of which can be accessed via the following link: [Covid-19 Coronavirus Advice and Guidance](#).

Help for families who have had changes to income:
If families have been working and their income has been reduced, then they will need to contact the Department for Work and Pensions (DWP) to find out if they are entitled to Universal Credit. The claim will need to be made online direct with the DWP: <https://www.gov.uk/universal-credit/how-to-claim>.

For families where income has decreased but where there is no entitlement to Universal Credit, there may still be an entitlement to local support for council tax and free school meals by completing the following form: www.barnsley.gov.uk/benefit-claim-form.

Council Tax, Local Council Tax Support and Free School Meals:

Families who are struggling to pay their council tax can contact BMBC by telephone on **01226 787787** (select **option 2**). Please be aware that the lines are extremely busy and BMBC are working hard to make extra staff available to respond to calls.

For anyone in receipt of local council tax support and free school meals where there has been a change in income, a 'change in circumstances' form will need to be completed as there may be an entitlement to further help with council tax payments. The form can be accessed via the following link: www.barnsley.gov.uk/benefit-change-in-circs-form

Entitlement to local council tax support and free school meals will be reassessed as soon as possible. If, in the meantime, families are struggling to pay their council tax they should contact BMBC on **01226 787787** (select **option 2**) to discuss a payment arrangement.

Council Tax Hardship Scheme:

The Government has announced that a council tax hardship scheme will be available to those who are considered 'financially vulnerable'. Details of the scheme will be published at some point this week.

Once published, details will also be made available via the following link: [Covid-19 Coronavirus Advice and Guidance](#).

Help for families who have had changes to income:
For general advice regarding the help and support available at this time please visit BMBC's website via the following link: [Benefits Help and Support](#)

The local welfare assistance scheme helps people who are in financial crisis due to an emergency or other unexpected circumstance: [Local Welfare Assistance Scheme](#).

For assistance with food: [Foodbanks in Barnsley](#).

As the phone lines are extremely busy at this time, BMBC are recommending that, wherever possible, people make contact via the webchat facility available on all council tax, council tax support and housing benefit webpages.

Anyone without access to the internet should call **01226 787787** (select **option 3**). An appointment will then be made to phone you back to go through any forms over the telephone.

Useful links

We have included below quick links that have been shared over recent weeks that you may find helpful:

Key Worker and Vulnerable Booking Form:
[Booking Form](#)

Requesting support with Frog when you cannot log in to the system:
[Frog Support Request](#)

Supporting the mental health and wellbeing of our students during the school closure period:
[Mental Health Frog Page](#)

How students should access work during the school closure period:
[School Closure Video](#)

Contacting school by email (general enquiries):
enquiries@penistone-gs.uk

Follow us on Twitter:
[@PGSALC](#)

Indication of Provision Requirements Form for Frontline and Blue-Light Worker Provision
[Indication of Provision Required](#).

Sending us your Proud Thursday submissions:
proudthursday@penistone-gs.uk

New Library Development:
[Mrs Demetriou's blog](#)

Become a Friend of our new PGS Library:
[DonateMySchool](#)

